

FS2 History Toys and Games Spring 1

Communication and language

- Learn new vocabulary.
- Use new vocabulary through the day.
- Ask questions to find out more and to check they understand what is being said to them.
- Articulate their ideas and thoughts in well- formed sentences.
- Use talk to help work out problems and organise thinking and activities explain how things work and why they might happen.
- Listen to and talk about stories to build familiarity and understanding.
- Engage in non-fiction books.
- Listen to and talk about selected non-fiction to develop a deep familiarity with new knowledge and vocabulary.

Personal, Social and Emotional Development.

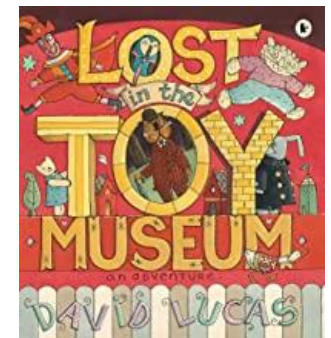
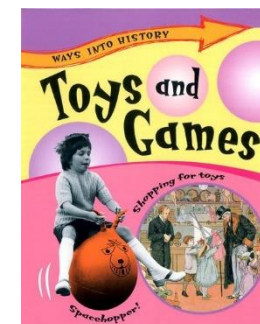
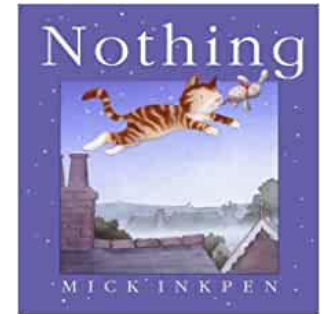
- Build constructive and respectful relationships.
- Express their feelings and the feelings of others.
- Show resilience and perseverance in the face of challenge.
- Identify and moderate their own feelings socially and emotionally.
- Think about perspectives of others.

Literacy

- Write a short sentence with words with known sound-letter correspondences using a capital letter and full stop.
- Re-read what they have written and check it makes sense.

Understanding the world.

- Comment on images of familiar situations in the past.



Vocabulary		People	Key Knowledge
Toy	An object for a child to play with.	I can tell you what I know about toys I play with.	I know toys have changed over time.
Material	What a thing is made from.	I can ask questions about how a toy works.	I know toys are made from different materials.
modern	Present times.	I can identify a picture of an old fashioned toy and a modern toy.	I know how toys move and how this has changed from toys in the past.
Past	Gone by in time.	I can explain how a toy works.	I know how to play with different toys.
Mechanical	Has working parts.	I can share my toys.	I know how toys work.
Victorian	In the past when Victoria was queen.	Timeline or key dates	
old	Made a long time ago.	<ul style="list-style-type: none"> • Victoria • Grandparents' toys • Parents' toys • Your toys 	
New	Recent/now		
Timeline	Marking important events through the passing of time.		
Family	A group of people related.		
Useful websites Smythstoys.com Argos.co.uk Twinkl PowerPoint		Diagrams/pictures/photos	
		<p style="text-align: center;">Toy Timeline</p> <p>The diagram is a horizontal timeline with five colored boxes representing different eras. Above the boxes are icons of toys from each era, and below are labels for each era. The boxes are: 1. Victorian Toys (pink): teddy bear, crayons, motorcycle. 2. Early 20th Century Toys (orange): teapot, blocks, LEGO, fan. 3. Grandparents' Toys (red): LEGO, fan. 4. Parents' Toys (orange): girl with toys, Game Boy. 5. Your Toys (orange): robot.</p>	

